

# CLASS FOUR: CRYSTAL GRIDS

## WHAT ARE CRYSTAL GRIDS?

Crystal grids are the marriage of Sacred Geometry, healing crystals and intention.

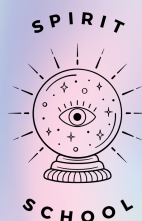
Crystal grids are an arrangement of energetically aligned crystals in a sacred geometric shape charged by an intention for the purpose of amplification or manifestation.

Crystals have a crystalline structure, so under a microscope, crystals have repeating patterns of sacred geometry. They are condensed vortexes of energy.

So when we create a crystal grid, we are aligning the called upon crystals with the called upon geometric form with our intention to manifest,

Geometry is said to provide the container for all life. We live in the pattern reality - and so sacred geometry offers us wisdom of the microcosm and macrocosm simultaneously.

[GRIGORIAKRITSOTELIS.COM](http://GRIGORIAKRITSOTELIS.COM)



# CLASS FOUR: CRYSTAL GRIDS

## SETTING UP YOUR CRYSTAL GRID:

**Step One:** Set your intention

**Step Two:** Buy a selection of crystals that you are intuitively drawn to

**Step Three:** Decide on your materials (will you use a canvas, a board, a picture, sacred geometry, art, etc.)

**Step Four:** Cleanse and bless your board and all your crystals and materials

**Step Five:** Choose your Centre Stone (your anchor)

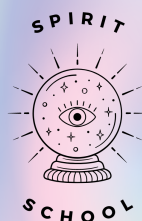
**Step Six:** Choose your surrounding stones (use a variety) and place them where you're intuitively called to place them

**Step Seven:** Decide if you want to use some Amplification Stones (certain shapes like points to amplify the intention)

**Step Eight:** Add elements that are important to you if you desire, such as your totem, earth elements, photos, words, etc.

**Step Nine:** Activate your Crystal Grid (instructions on the next page)

GRIGORIAKRITSOTELIS.COM



# CLASS FOUR: CRYSTAL GRIDS

## ACTIVATING YOUR CRYSTAL GRID:

Use a crystal or metal wand, a pendulum, or your hands to extend your energy field for the purpose of amplifying and transmitting your intention to the grid.

Decide on your intention and/or mantra before you activate your crystal grid.

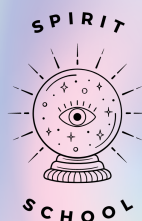
Affirm as you activate your grid. Visualise the energy moving from you, through you, to the grid, beyond the grid into the ether. Direct energy into the centre anchoring stone.

Use your tool to connect each of the crystals energetically creating a tether.

Say thank you to the crystals for working with you.

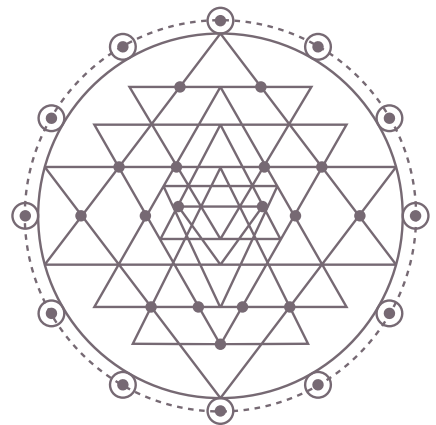
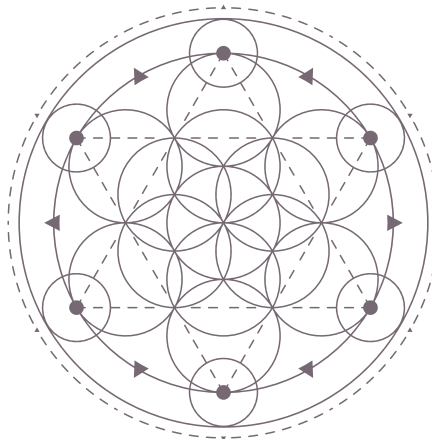
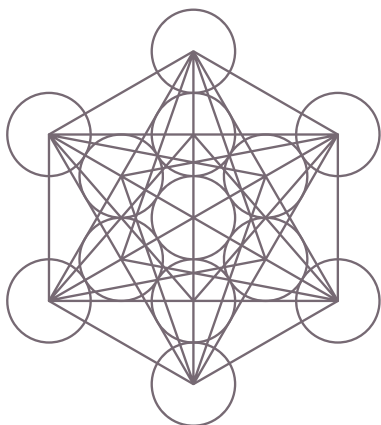
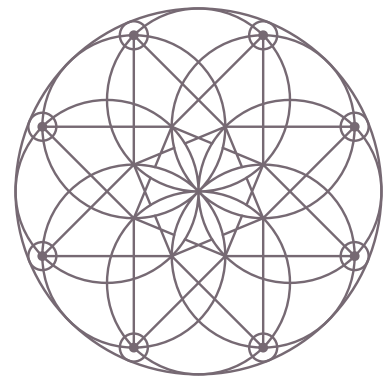
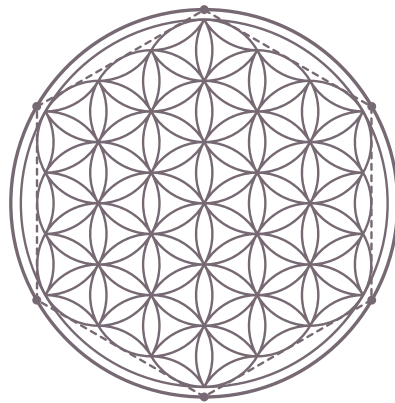
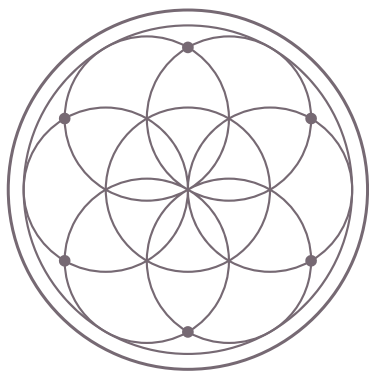
Leave your crystal grid in your space for 30 days before displaying it.

GRIGORIAKRITSOTELIS.COM

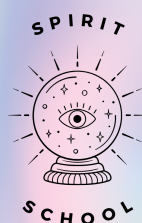


# CLASS FOUR: CRYSTAL GRIDS

## SACRED GEOMETRY



GRIGORIAKRITSOTELIS.COM



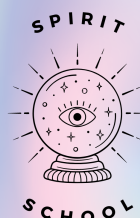


# CLASS FOUR: CRYSTAL GRIDS

## EXAMPLES OF CRYSTAL GRIDS

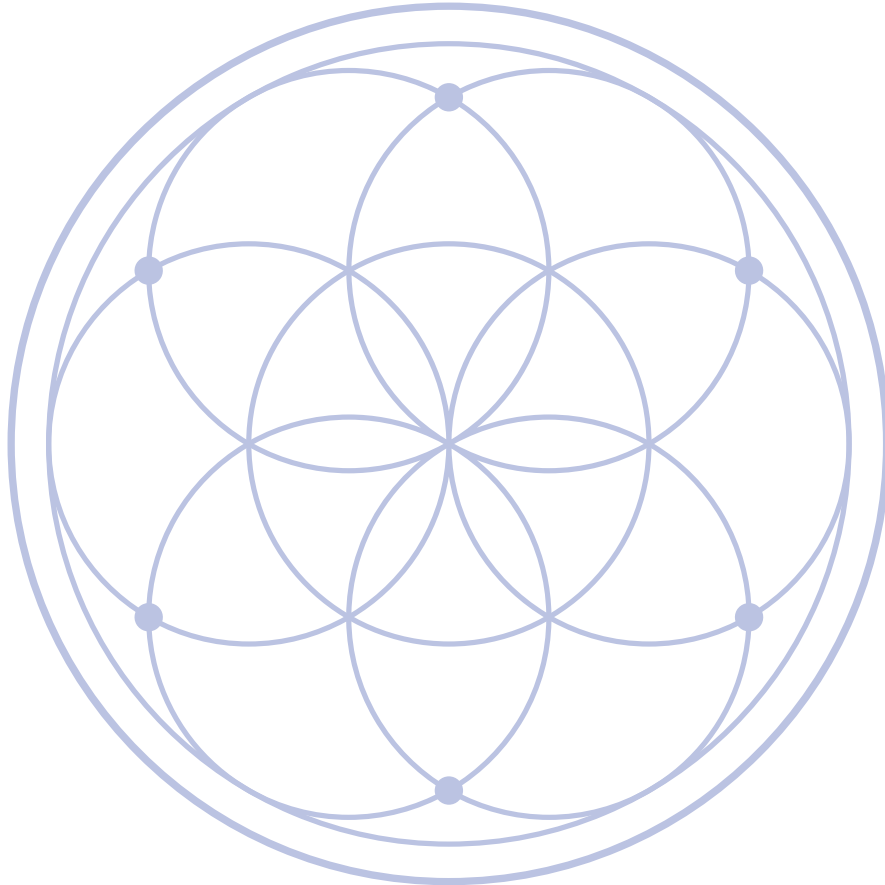


GRIGORIAKRITSOTELIS.COM

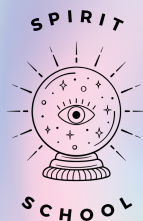


## CREATE YOUR OWN CRYSTAL GRID (A MOCK UP)

Your intention: \_\_\_\_\_



Write a list of the crystals you would use here:



# CLASS NOTES

GRIGORIAKRITSOTELIS.COM

